

Department of Education – Western Province
Information and Communication Technology
2nd Term Evaluation - 2019
Marking Scheme - Grade 11
Paper 1

Question Number	Answer	Question Number	Answer	Question Number	Answer	Question Number	Answer
1	3	11	2	21	3	31	3
2	2	12	4	22	3	32	4
3	1	13	3	23	1	33	2
4	2	14	3	24	4	34	1
5	4	15	2	25	2	35	1
6	2	16	2	26	4	36	1
7	4	17	4	27	2	37	1
8	4	18	4	28	4	38	3
9	4	19	3	29	1	39	2
10	3	20	3	30	3	40	1

(1 x 40 = 40 marks)

Paper 2

1.

(i) Any correct answer.

(1 x 2 = 2 marks)

(ii)

- The ability to withdraw cash anytime anywhere at Automatic Teller machine (ATM).
- Since banks are connected via internet, inter banking or transactional activities are made possible even within Sri Lanka or abroad.
- When you are registered in a banking network, it gives one the opportunity to pay utility bills, inter-banking transactions, checking the account balance, using mobile phones.

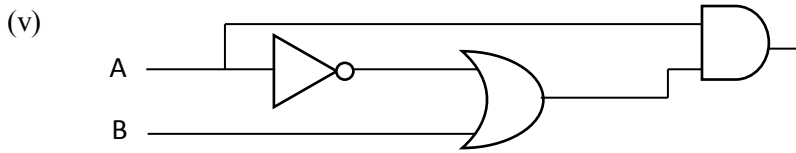
(1 x 2 = 2 marks)

(iii)

- A - ③
- B - ②
- C - ④
- D - ①

(0.5 x 4 = 2 marks)

- (iv) (a) 117_{16} _____ (1 mark)
 (b) 427_8
 $= 279_{10}$ _____ (0.5 marks)
 $= 001001111001_{BCD}$ _____ (0.5 marks)



(2 or 0 marks)

- (vi) Ctrl + B , Ctrl + U , Ctrl + I

(1 or 2 correct 1 mark
all correct 2 marks)

- (vii) (A) $= B4 * B4$ or
 $= B4 ^ 2$ or
 $= MIN(A2:E4)^2$
 (B) $= F2 * E2$ or
 $= F2 * MAX(A2:E4)$ or
 $= MAX(A2:E4) * F2$

(2 marks)

- (viii) ① ---→ Data Redundancy
 ② ---→ Consistency
 ③ ---→ Data duplication
 ④ ---→ Efficiency

(0.5 x 4 =2 marks)

- (ix) A ---→ True
 B ---→ True
 C ---→ False
 D ---→ True

(0.5 x 4 =2 marks)

- (x) 11
 13
 15
 9

(0.5 x 4 =2 marks)
 (2 x 10 = 20 marks)

2.

- (i) $=SUM(D4:H4)$ (1mark)
 (ii) $=SUM(D14:G14)/I14*100$ (2 marks)
 (iii) Select J14 cell and copy
 Select J4 to J13 and paste (1mark)
 (iv) $=RANK(J8,J$4:J$14)$ (2 marks)
 (v) $=I4/I$15*100$ (2 marks)
 (vi) $=J8 -J12$ (1mark)
 (vii) $=MAX(H4:H14)$ (1mark)

(10 marks)

3. If the Table names and field names are not given same as in the question paper no marks awarded.

- (i) CusNo ---→ Employee table
 VType ---→ Vehicle_Type table
 ❖ If the related table names with the primary key is not written, no marks awarded.
(1x 2 =2 marks)

- (ii) (a) Transport table
 (b)

2019/04/10	C04	B	320
------------	-----	---	-----

(1x 2 =2 marks)

- (iii) (a) Employee table, Transport table *(2 marks)*
 (b) Employee table

C05	Saman	
-----	-------	--

Transport table

2019/04/12	C05	A	65
------------	-----	---	----

(1x 2 =2 marks)

- (iii)* Employee table, Transport table, Vehicle_Type table *(2 or 0 marks)*

(10 marks)

4.

- (i) B---→ Designing the solution *(1 mark)*
 D---→ Testing and debugging *(1.5 marks)*
 E---→ Deployment of the system *(1.5 marks)*

- (ii) 1---→ A
 2---→ B
 3---→ D
 4---→ E

(1.5 x 4 =6 marks)

(10 marks)

5.

- A ---→ Uniform Resource Locator
 B ---→ Protocol
 C ---→ org
 D ---→ E-mail account
 E ---→ Google

(2 x 5 =10 marks)

6.

- | | | | | | |
|---|---|--------|----|---|----|
| 1 | - | title | 7 | - | U |
| 2 | - | h1 | 8 | - | br |
| 3 | - | center | 9 | - | th |
| 4 | - | img | 10 | - | td |
| 5 | - | p | | | |
| 6 | - | I | | | |

(1 x 10 =10 marks)

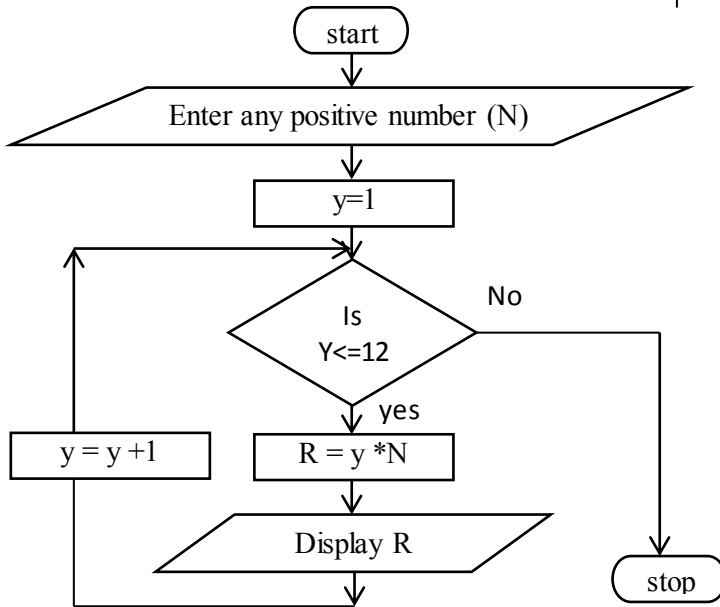
7. (i)

- A. $C < 10$
- B. $\text{Num} > \text{Max}$
- C. yes
- D. No
- E. $C = C + 1$
- F. Display Max

- A. $C < 10$
- B. $\text{Num} < \text{Max}$
- C. No
- D. yes
- E. $C = C + 1$
- F. Display Max

(0.5 x 6 = 3 marks)

(ii)



❖ If not written in the correct symbols, no marks awarded.

start , stop _____ 1 mark

Enter any positive number (N) _____ 1 mark

Is $y \leq 12$ _____ 1 mark

$y = y + 1$ _____ 1 mark

$R = y * N$ _____ 1 mark

Display R _____ 1 mark

Yes , No _____ 1 mark

(7 marks)

(10 marks)